

WEB TENSION CONTROL SOLUTIONS



Keep your process under control while speeding up production



Save your money by reducing scrap (FAST ROI)



Unique Controller for all Applications :
Open loop, load cells, dancer



Simple & Cost Effective solution compared to servo drive

COMPLETE OFFER

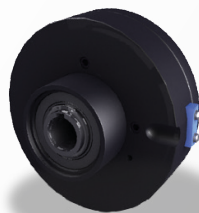
FOR PRECISION TENSION CONTROL DEDICATED TO PACKAGING MACHINES



WAT C

CANTILEVER LOAD CELL ROLLER

- Compact, easy to install with different design solution (cartridge style, slim, cantilever)
- Stainless steel body for longer lifetime in industrial environment
- Industrial standard M12 connector (cable included)



FAT 50

EMP BRAKES

- Smooth torque transmission with the magnetic powder-ball technology
- Clean (dustless) & silent actuator
- Electrical brake (24V supply)
Torque proportional to current & independent of RPM»

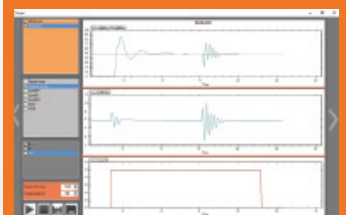


DG BLOCK

DIGITAL CONTROLLER

- **All in One Solution :**
Build-in precision amplifier
PID regulation algorithm
Build-in power supply for brake
- Free software for fast & efficient setting up of the controller and data monitoring

SIMPLE & USER FRIENDLY



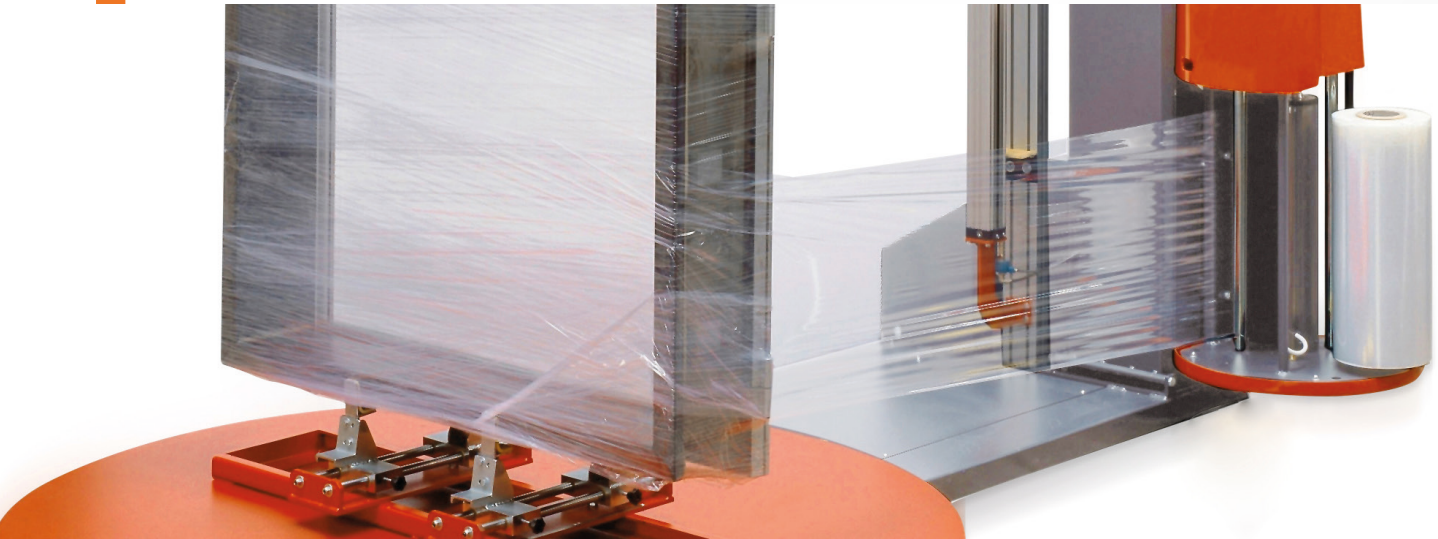
DG SOFT INTERFACE



TCP / IP

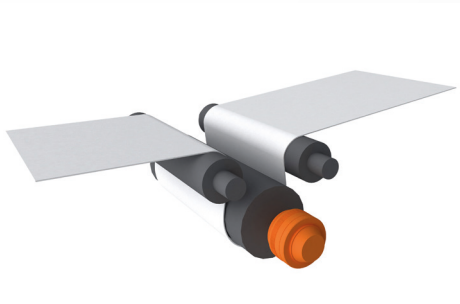
HMI & PLC
COMMUNICATION

MARKET APPLICATIONS



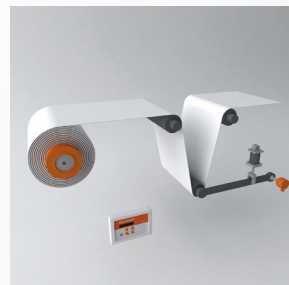
- UNWIND / REWIND
- CAPSTAN (ROLLER TENSION CONTROL)
- LAMINATING / COATING/ SEALING OPERATION
- WRAPPING MACHINE

APPLICATIONS SCHEMES



Think about it.

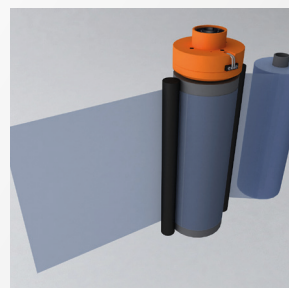
Torque limiter : a cost effective, simple & stand-alone solution



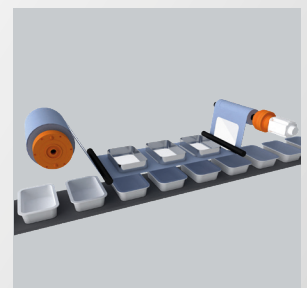
DANCER SOLUTION



**LOAD CELL
CLOSE LOOP**



**STRETCH WRAPPING
SOLUTION**



FLOWPACK MACHINE