

DGblock

Digital Controller

Specifically designed for multi-spindle tension control applications, DGblock is the new benchmark in closed loop digital controller for any industries using equipment managing a large number of wires, cables, fibers or even narrow webs.

Designed with the most advanced technologies, DGblock offers a complete range of specialized functions all in an incredibly compact controller.

DGblock is a true turnkey solution relying on a very intuitive programming system based on exclusive computer software.

One of the most convenient features is the bus connector at the back of the enclosure which allows for a distribution of common data such as: Power supply, set-point and the process instruction from one master device to several slaves devices, without any extras wiring required.

Features

INPUT

Set point	V DC	0 --> 10
Measure	V DC	1mV --> 10V
Logic	V DC	5 --> 24
(Process control)	mA	15 max

OUTPUT

Analogue AO1 & AO2	V DC	-10 --> 10
Max output current	A	1,5
Alarm	AI+	V CE max 70 V
	AI-	iC max 50 Ma

POWER SUPPLY

supply voltage	V	20 --> 30
max consumption	VA	50

SENSOR SUPPLY

supply voltage	V DC	5
----------------	------	---

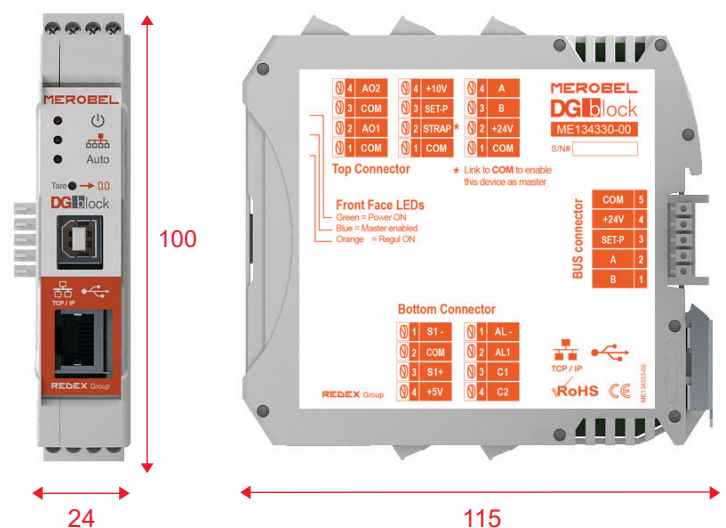
TEMPERATURE

operating	°C	0 --> 40
-----------	----	----------

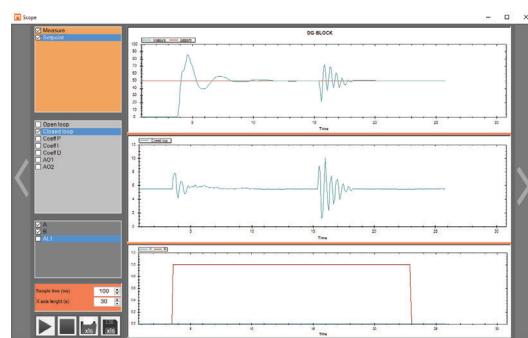
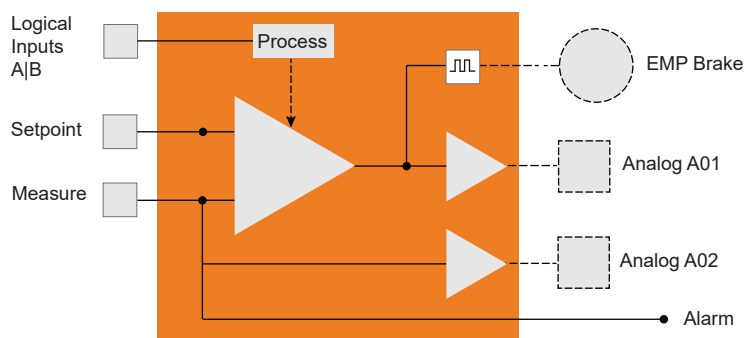


Advanced Features of regulation

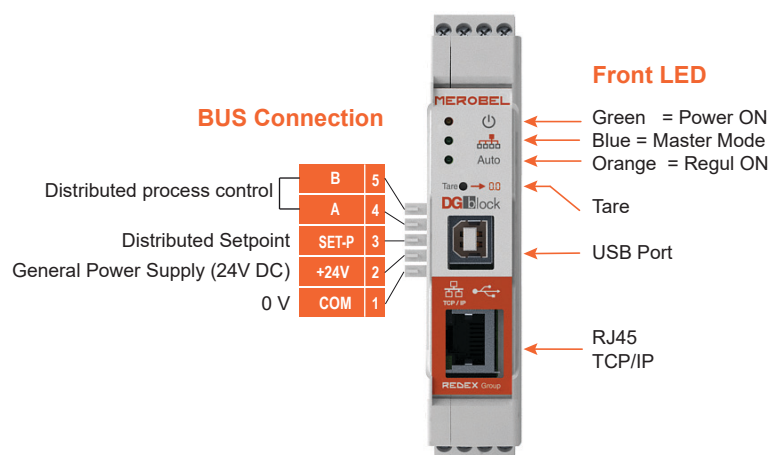
- ▶ Built-in precision amplifier for 1 or 2 sensors
- ▶ Compatible with all load cell technologies
- ▶ P.I.D regulation algorithm
- ▶ Combinations of open + closed loop function for demanding applications
- ▶ Emergency stop with torque proportional to the set-point
- ▶ Soft start function with programmable ramp
- ▶ Very easy set-up with the PC software (Windows)
- ▶ Multiple language choices
- ▶ Connection to the controller with MODBUS TCP Ethernet port
- ➕ ▶ Design specifically for multi spindle application



Schematic diagram



DG Soft Interface



Application Examples

Composites, Yarns, Fibers & Cables | Winders | Capstan tension control | Etc ...

