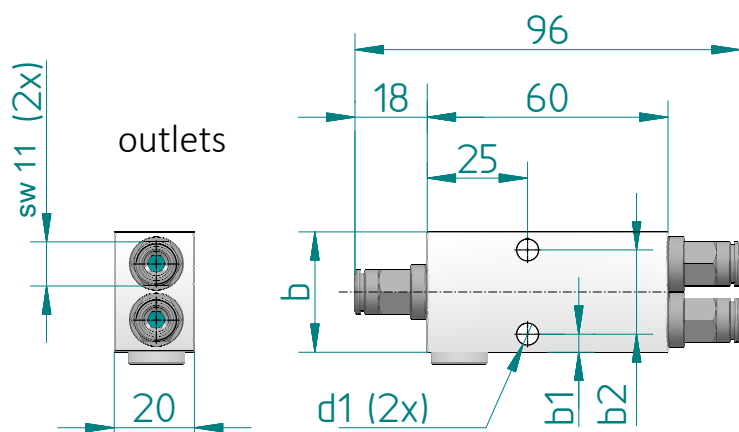


Splitter for oil



Passive flow dividers
(splitters) to expand
FlexxPump;
with tube connectors
for 6mm OD tube

Splitter: aluminum;
connectors: brass,
nickel-plated

outlets	inlet	tube	outlets	tube	b	b1	b2	d1	part-no.
2	straight	6	straight	6	30	4.5	21	5.5	234-005-006
3	straight	6	straight	6	48	18	15	6.5	234-005-007
4	straight	6	straight	6	60	17.5	25	6.5	234-005-008

The splitters are to be connected as close as possible to the outlets of the FlexxPump.

Only one splitter can be installed at each outlet of the FlexxPump.

Depending on the type of FlexxPump, the splitters can be connected as follows:

- FlexxPump 125 max. 1 splitter with 4 outlets
- FlexxPump 500 max. 4 splitters with 4 outlets each
- FlexxPump 2000 max. 10 splitters with 4 outlets each

It is not possible to operate two or more splitters on one pump outlet (no cascade of splitters)!

It is important to ensure that the tube lengths after Distributor are the same.

The splitters can be used for oils from 60 cSt, preferably with oils from the DLS range.

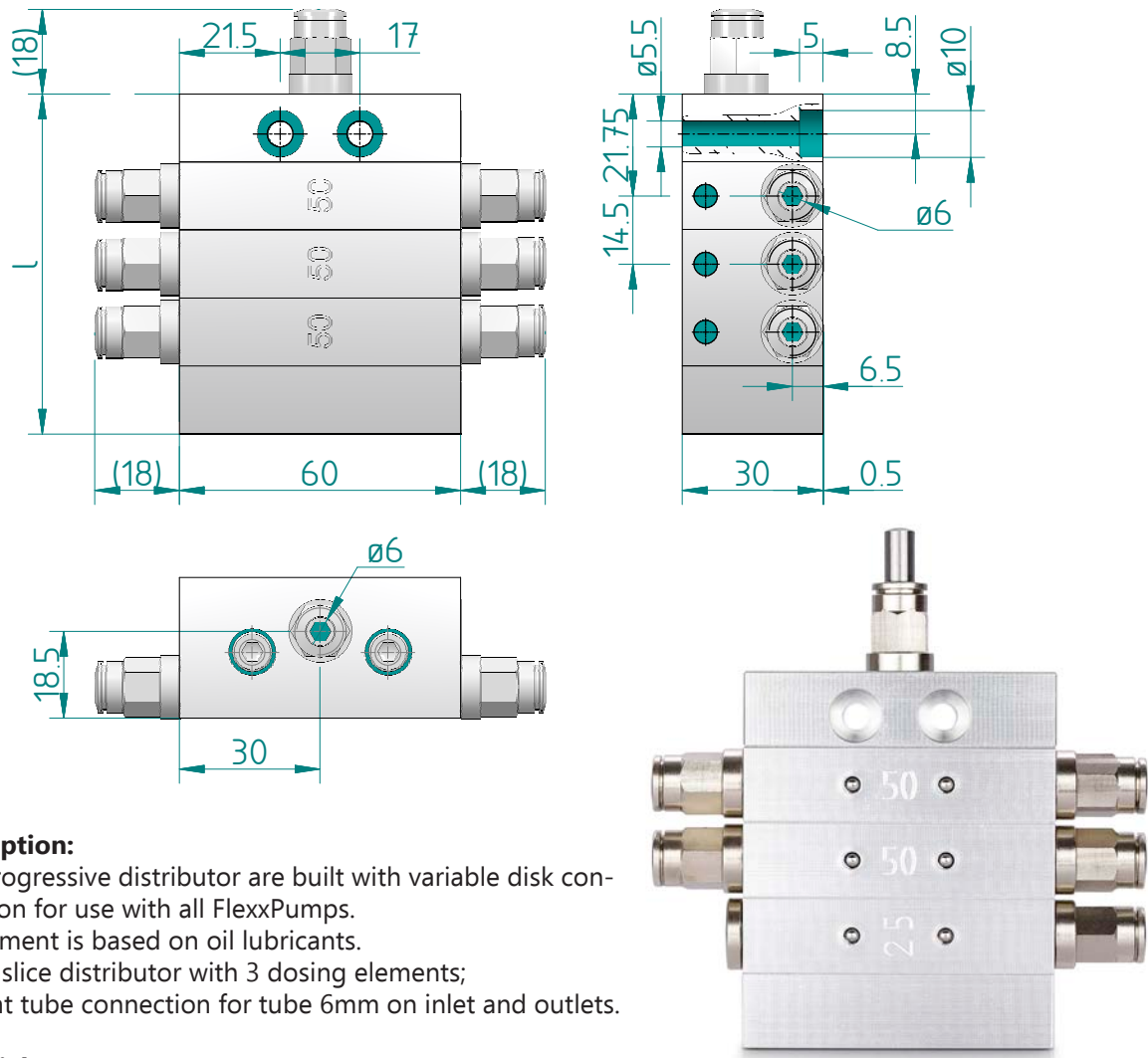
The splitters cannot be used when using lubricants with a solid content.

Operating temperature range: +10 ° C... +60 ° C

Splitters are primed with oil with H1 approval.



Progressive distributor



Description:

DLS progressive distributor are built with variable disk construction for use with all FlexxPumps. Adjustment is based on oil lubricants. 6-way slice distributor with 3 dosing elements; straight tube connection for tube 6mm on inlet and outlets.

Material:

Distributor: aluminum;
Connections: brass, nickel-plated

outlets	inlet	tube	outlets	tube	l	part-no.
2	straight	6	straight	6	72.5	238-000-002
3	straight	6	straight	6	72.5	238-000-003
4	straight	6	straight	6	72.5	238-000-004
5	straight	6	straight	6	72.5	238-000-005
6	straight	6	straight	6	72.5	238-000-006
7	straight	6	straight	6	87.0	238-000-007
8	straight	6	straight	6	87.0	238-000-008
9	straight	6	straight	6	101.5	238-000-009
10	straight	6	straight	6	101.5	238-000-010

Standard design:

- Modular disk constructed distributor in lightweight aluminum construction for use with FlexxPump 125/500/2000 for DLS oils
- 2 to 10 outlets per distributor possible
- Tube connection on inlet and outlets straight for 6 mm OD tube
- Maximum pressure 100 bar
- Dosing volume 50 mm³

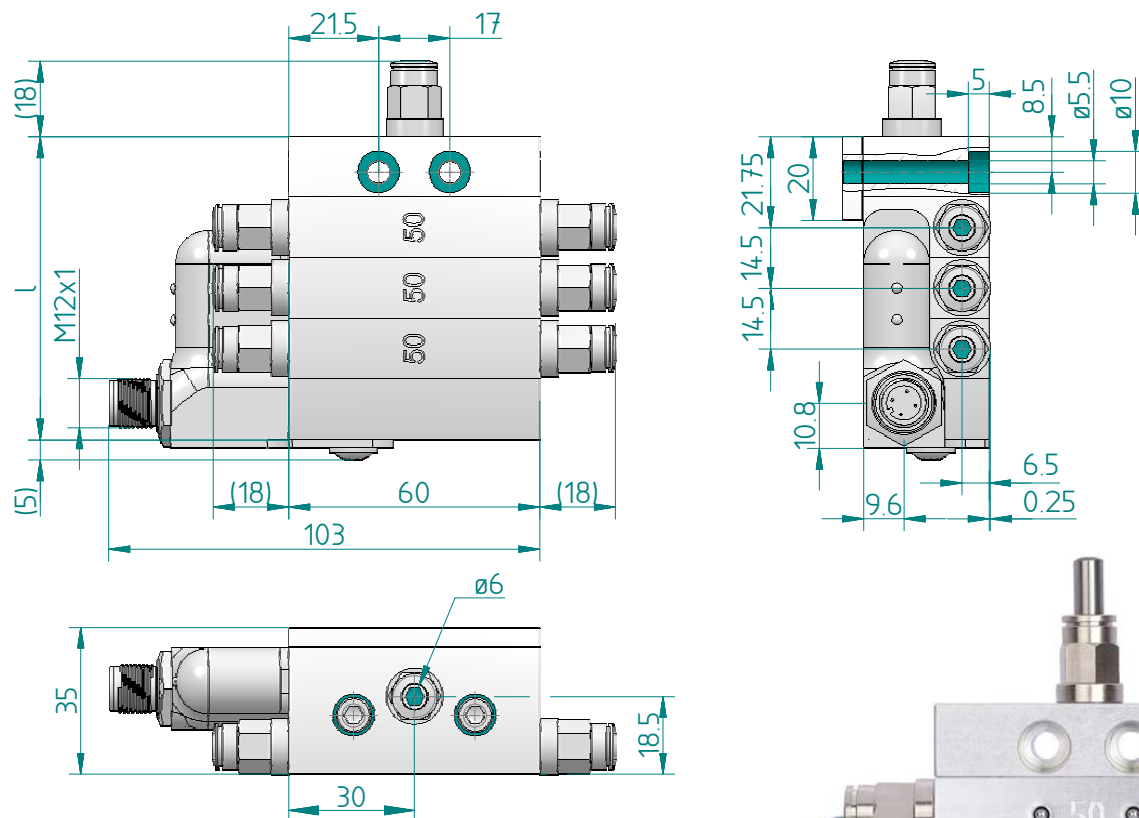
Special design (on request):

- Tube connection in various designs, straight / right-angled
- Different tube diameter,
- 4/6/8 mm on inlet or outlet
- Establishing the locations of the outlets
- Different delivery amounts per outlet through disc elements with different dosing volume (25/50/100 mm³)

Good to know:

- Only suitable DLS lubricant can be used!
- Operating temperature range: -20 ° C... +60 ° C (depending on the lubricant used)
- In connection with FlexxPump 125/500/2000 cannot be used in series (no main and secondary distributors / cascading)
- Primed with H1 approved oil

Progressive distributor with circulation monitoring



Description:

DLS progressive distributor in lightweight solution are built in a variable disk construction for all types of Flexx-Pump series. Alignment is based on oil lubricants. 6-way slice distributor with 3 dosing elements; straight tube connection for 6mm OD tube on inlet and outlets.

Material:

Distributor: aluminum
Connections: brass, nickel-plated



outlets	inlet	tube	outlets	tube	l	part-no.
2	straight	6	straight	6	72.5	238-010-002
3	straight	6	straight	6	72.5	238-010-003
4	straight	6	straight	6	72.5	238-010-004
5	straight	6	straight	6	72.5	238-010-005
6	straight	6	straight	6	72.5	238-010-006
7	straight	6	straight	6	87.0	238-010-007
8	straight	6	straight	6	87.0	238-010-008
9	straight	6	straight	6	101.5	238-010-009
10	straight	6	straight	6	101.5	238-010-010

Standard design:

- Modular disk constructed distributor in lightweight aluminum construction for use with FlexxPump 125/500/2000 for DLS oils
- With circulation monitoring to control the correct operation of all outlets
- 2 to 10 outlets per distributor possible
- Tube connection on inlet and outlets straight for 6 mm OD tube.
- Maximum pressure 100 bar
- Dosing volume 50 mm³

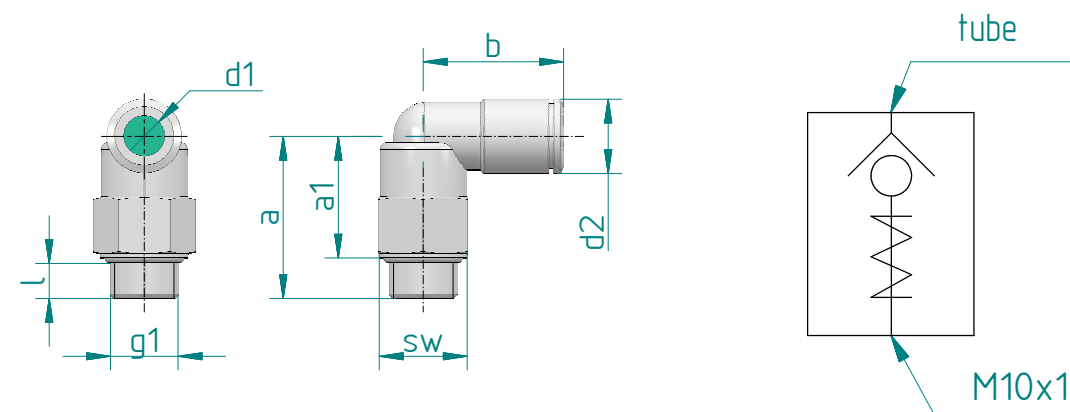
Special design (on request):

- Tube connection in various designs, straight / right-angled
- Different tube diameter,
- 4/6/8 mm on inlet or outlet
- Establishing the locations of the outlets
- Different delivery amounts per outlet through disc elements with different dosing volume (25/50/100 mm³)

Good to know:

- Only suitable DLS lubricant can be used!
- Operating temperature range: -20 ° C... +60 ° C (depending on the lubricant used)
- In connection with FlexxPump 125/500/2000 cannot be used in series (no main and secondary distributors / cascading)
- Primed with H1 approved oil

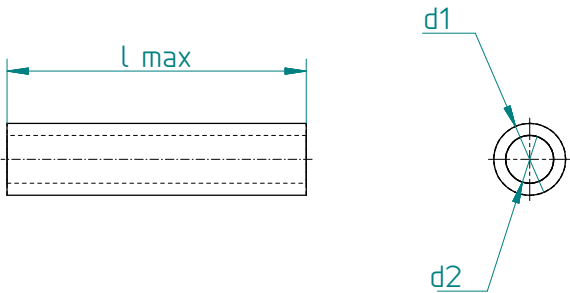
Tube connector with check valve



Description:
Tube connector with
integrated check valve;
right-angled;
360° rotatable;

Material:
brass, nickel-plated;
Seal: NBR

d1	g1	d2	a	a1	b	l	sw	part-no.
4	M10x1	9	24	18	20	5.5	13	134-001-200
6	M10x1	11	24	18	20,5	5.5	13	134-001-201
8	M10x1	13	25	19	23,5	5.5	13	134-001-202



Description:
Tube pre-filled with lubricant; (only OE1)

Material:
PA; black ; transparent only for oil

lubricant	d1	d2	l max.	good to know	part-no.
OE1	6	4	15 m	tube, black; by meter	134-003-051
empty	6	3	50 m	tube, transparent; by meter	134-004-002

accessories	part-no.
Tube cutter	134-002-002