

SRP *SIZE 1*



SRP1

Weight

Efficiency

Backlash

Color

Ratio

Nominal output torque

Max. output torque

No load torque

No load torque

E-stop torque

Max. input speed

Nominal input speed

Max tilting moment

Tilting stiffness

Torsional stiffness

Torsional stiffness

Inertia

General data

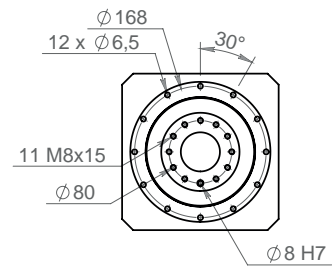
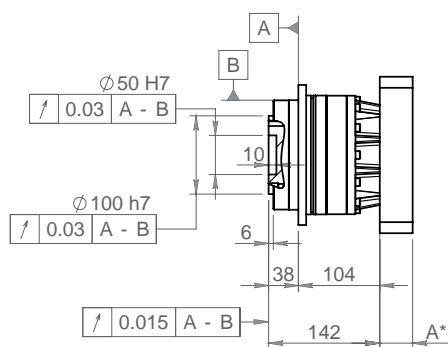
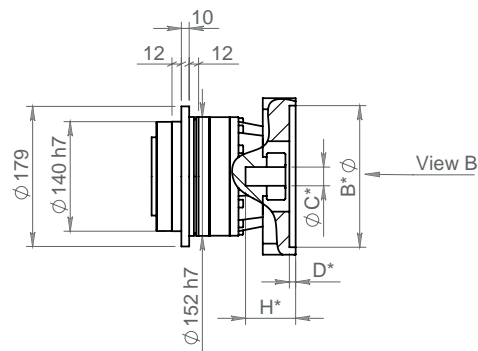
| | | | M | R |
|----------|--------|----------|----------|----------|
| m | kg | 1 Stage | 13,8 | 18,3 |
| | | 2 Stages | 14,9 | 17 |
| η | % | 1 Stage | 96 | 94 |
| | | 2 Stages | 93 | 91 |
| J | arcmin | Standard | 3 | 4 |
| | | Reduced | 1 | 2 |
| RAL2012 | | | | |

Technical features

| | | 5 | 7 | 10 | 17 | 21 | 31 | 46 | 61 | 91 |
|---------------|--------------------|----------|----------|-----------|-----------|-----------|-----------|-----------|-----------|-----------|
| T2N | Nm | 370 | 380 | 270 | 390 | 305 | 430 | 270 | 375 | 270 |
| T2B | Nm | 648 | 665 | 473 | 683 | 534 | 753 | 473 | 656 | 473 |
| T01 +R | Nm | 5 | 5 | 5 | 1,5 | 1,5 | 1,5 | 1,5 | 1,5 | 1,5 |
| T01 +M | Nm | 4,5 | 4,5 | 4,5 | 1 | 1 | 1 | 1 | 1 | 1 |
| T2NOT | Nm | 1250 | 1250 | 1250 | 1250 | 1250 | 1250 | 1250 | 1250 | 1250 |
| n1B | rpm | 5000 | 5000 | 5000 | 6000 | 6000 | 6000 | 6000 | 6000 | 6000 |
| n1N | rpm | 1600 | 1600 | 1600 | 2600 | 2600 | 2600 | 2600 | 2600 | 2600 |
| T2K | Nm | 1490 | 1490 | 1490 | 1490 | 1490 | 1490 | 1490 | 1490 | 1490 |
| C2K | Nm/ arcmin | 650 | 650 | 650 | 650 | 650 | 650 | 650 | 650 | 650 |
| C2t +R | Nm/ rad | 295646 | 250956 | 213140 | | 237205 | 254393 | 237205 | 247518 | 278457 |
| | Nm/arcmin | 86 | 73 | 62 | | 69 | 74 | 69 | 72 | 81 |
| C2t +M | Nm/ rad | 412530 | 350650 | 309397 | 292208 | 292208 | 261269 | 240642 | 247518 | 278457 |
| | Nm/arcmin | 120 | 102 | 90 | 85 | 85 | 76 | 70 | 72 | 81 |
| I +M | kg.mm ² | 922 | 767 | 684 | 291 | 271 | 260 | 255 | 246 | 245 |
| I +R | kg.mm ² | 2479 | 2324 | 2241 | | 460 | 449 | 443 | 435 | 434 |

SRP SIZE 1

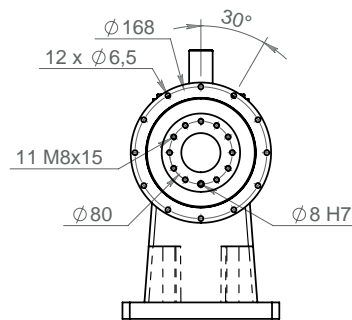
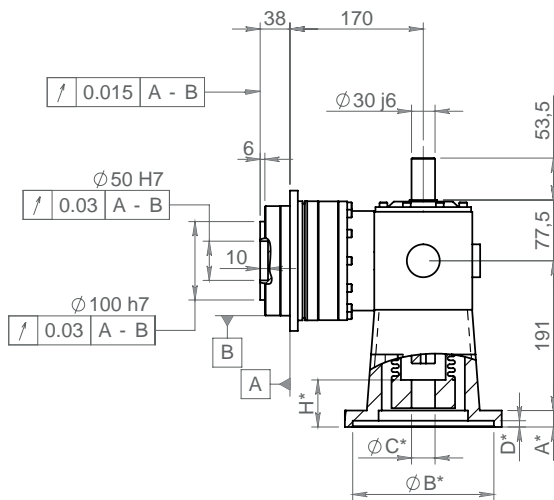
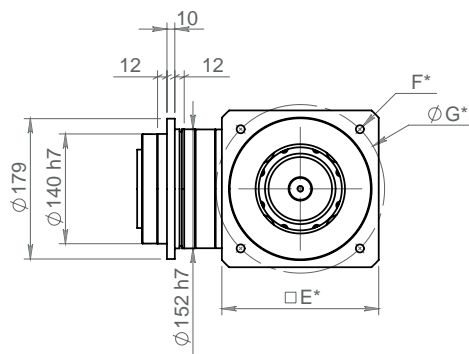
DIMENSIONS - TYPE M 1 stage



| | IFB 140 14/24 | IFB 140 28/38 | IFB 200 28/38 | IFB 260 28/38 |
|----------|---------------|---------------|---------------|---------------|
| A | 37 | 42 | 57 | 64 |
| E | 140 | 140 | 200 | 260 |
| H | 59 | 65 | 80 | 87 |

*B C D F G According to motor dimensions
Tapping depth = 1.5x0 thread

DIMENSIONS - TYPE R 1 stage

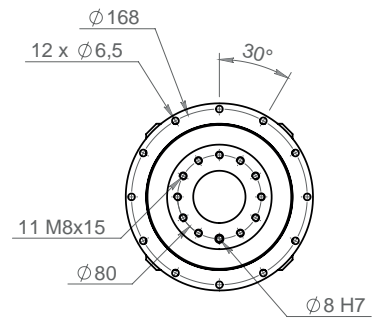
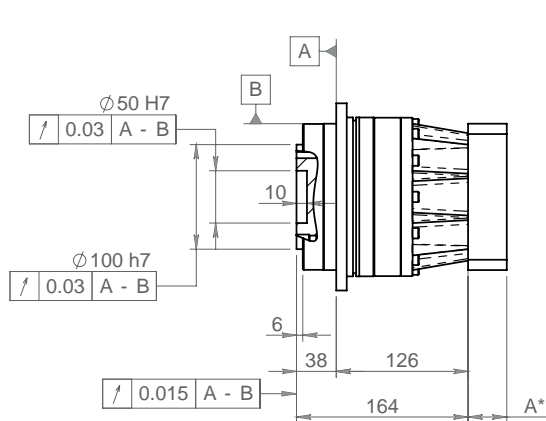
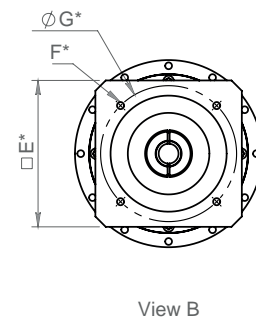
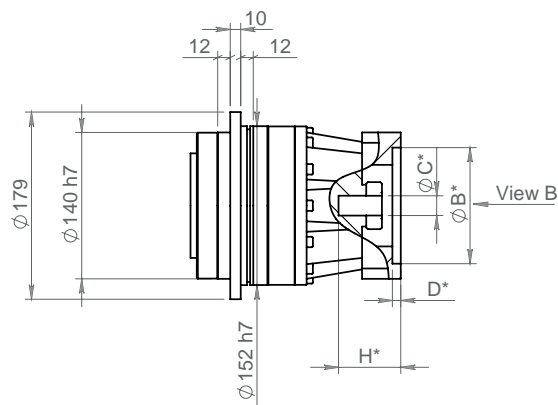


| | MF3 140 | MF3 200 | MF3 260 |
|----------|---------|---------|---------|
| A | 21 | 21 | 24 |
| E | 140 | 200 | 260 |
| H | 80 | 80 | 83 |

*B C D F G According to motor dimensions
Tapping depth = 1.5x0 thread

Dimensions and main data for information only - Please consult us and / or refer to Products Datasheets
For accurate selection, contact your local supplier

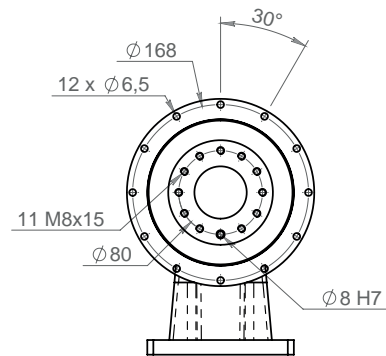
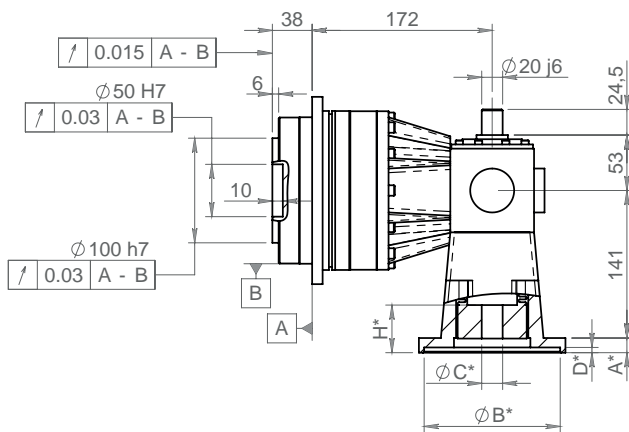
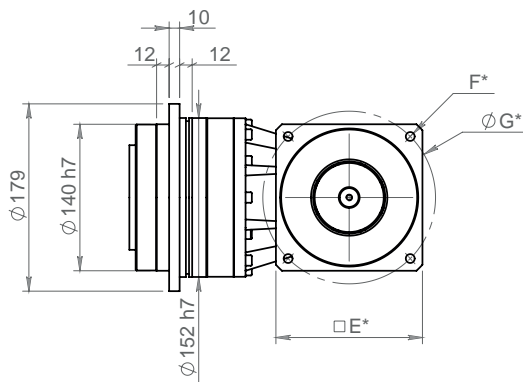
DIMENSIONS - TYPE M 2 stages



| | IFA 100 11/19 | IFA 140 11/19 | IFA 140 22/32 | IFA200 22/32 |
|----------|---------------|---------------|---------------|--------------|
| A | 27 | 27 | 37 | 42 |
| E | 100 | 140 | 140 | 200 |
| H | 49 | 49 | 59 | 64 |

*B C D F G According to motor dimensions
Tapping depth = 1.5x0 thread

DIMENSIONS - TYPE R 2 stages



| | MF1 100 | MF1 140 | MF1 200 |
|----------|---------|---------|---------|
| A | 14 | 14 | 18 |
| E | 100 | 140 | 200 |
| H | 62 | 62 | 66 |

*B C D F G According to motor dimensions
Tapping depth = 1.5x0 thread

Dimensions and main data for information only - Please consult us and / or refer to Products Datasheets
For accurate selection, contact your local supplier