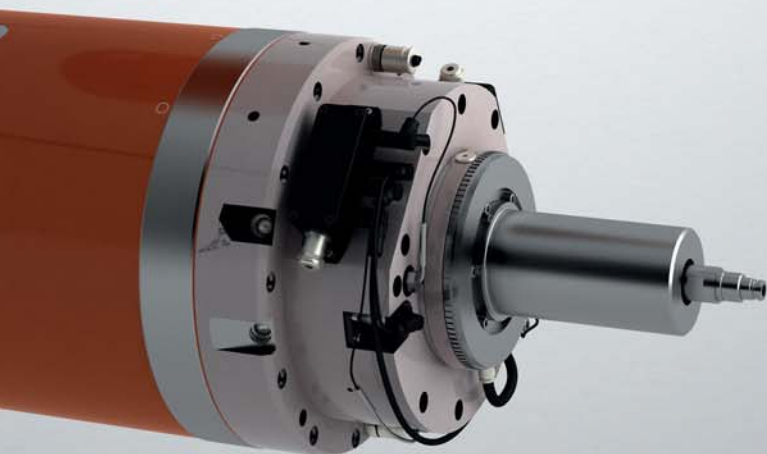
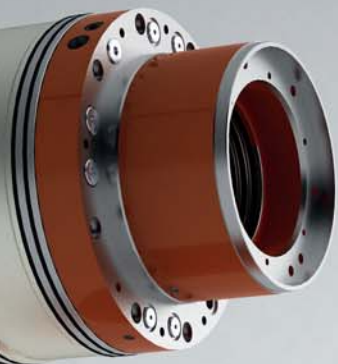


# RAM *SIZE 190*



Speed	<b>N1B</b>	<b>[rpm]</b>
Power	<b>P</b>	<b>[kW]</b>
Torque	<b>T2N</b>	<b>[Nm]</b>

Speed	<b>N1B</b>	<b>[rpm]</b>
Power	<b>P</b>	<b>[kW]</b>
Torque	<b>T2N</b>	<b>[Nm]</b>

Mounting position

Control

Interface

Cooling/Flow rate **[l/mn]**

Cooling/Loss power **[kW]**

Bearings lubrication

Lubrication/Flow rate **[l/mn]**

Lubrication/Loss power **[kW]**

Speed shifting/Pressure **[bar]**

Speed shifting/Flow rate **[l/mn]**

RAM design for external forced lubrication

Gearbox only

Gearbox + Cooling Jacket

Gearbox + Cooling Jacket  
+ output shaft arrangement

## S1 - 100%

Gear 1:1		Gear 5:1	
1500	12000	300	2400
25.6	25.6	24.8	24.8
163	20	790	99

GM 800



RAM 190



## S6 - 40%

Gear 1:1		Gear 5:1	
1500	12000	300	2400
35.6	35.6	34.5	34.5
227	28	1100	137

## Technical Features

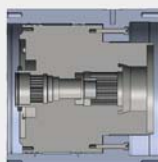
Vertical, horizontal and Swiveling
Siemens/Fanuc/Heidenhain
Internal splines
25
0.77
Grease
1.5
0.46
50 to 100
5 to 7

## Interface

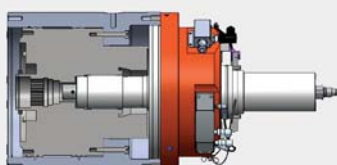
HIT



FOT



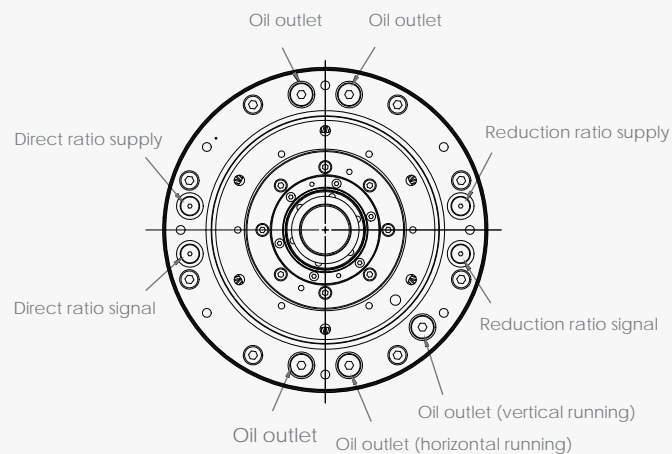
FOA



## DIMENSIONS

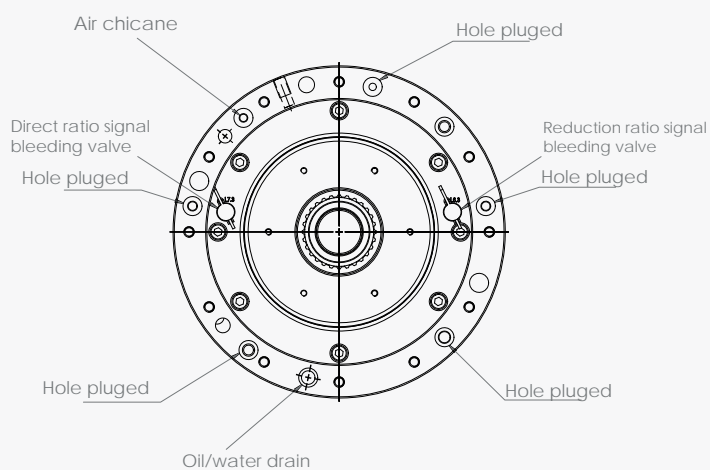
HIT

**A View**



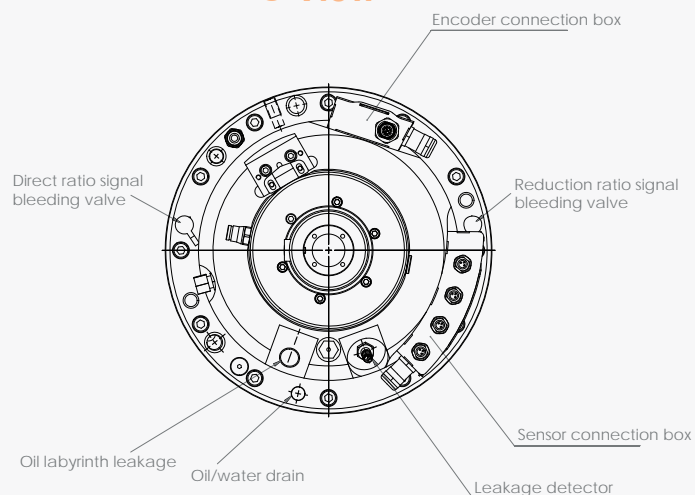
FOT

**B View**



FOA

**C View**

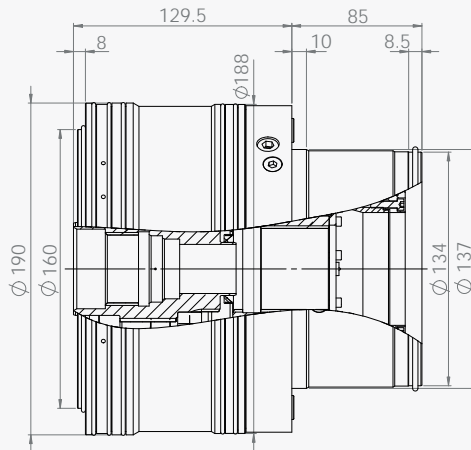


# DIMENSIONS

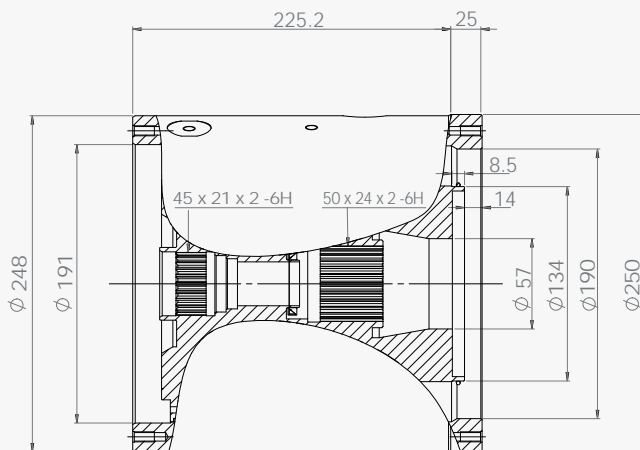
GM 800



RAM 190

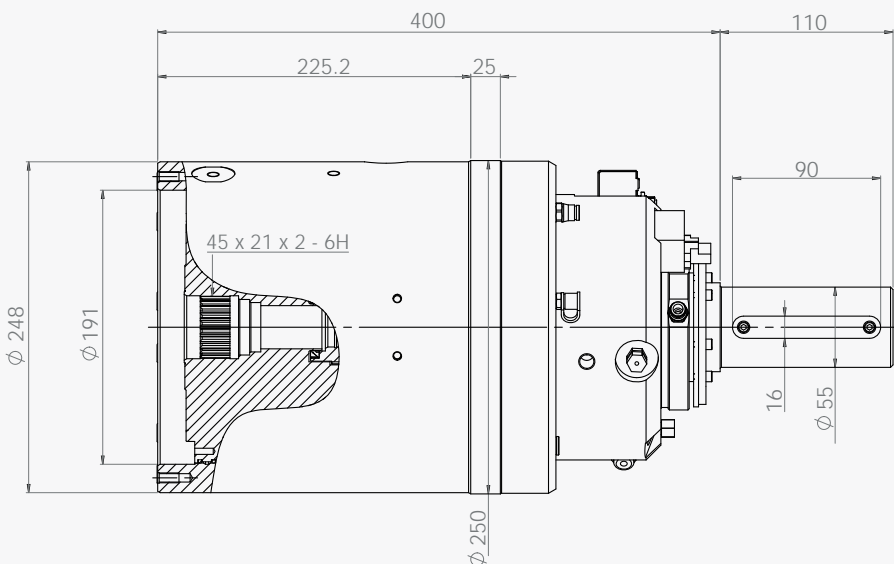
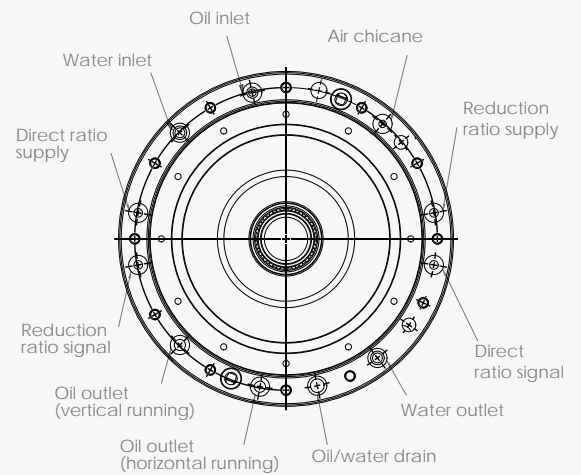


A



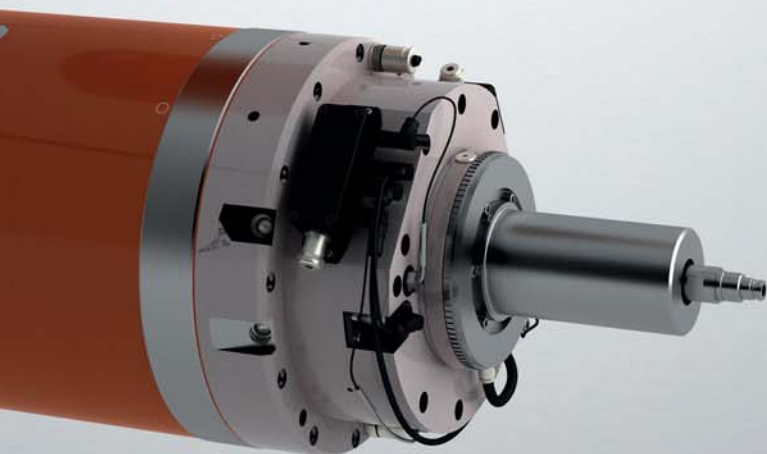
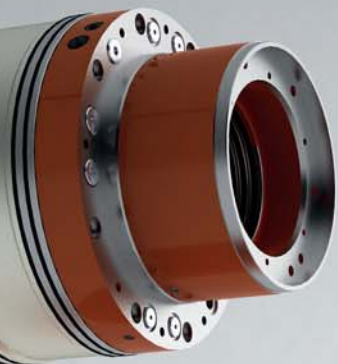
B

D View



C

# RAM *SIZE 220*



Speed	<b>N1B</b>	<b>[rpm]</b>
Power	<b>P</b>	<b>[kW]</b>
Torque	<b>T2N</b>	<b>[Nm]</b>

Speed	<b>N1B</b>	<b>[rpm]</b>
Power	<b>P</b>	<b>[kW]</b>
Torque	<b>T2N</b>	<b>[Nm]</b>

Mounting position

Control

Interface

Cooling/Flow rate **[l/mn]**

Cooling/Loss power **[kW]**

Bearings lubrication

Lubrication/Flow rate **[l/mn]**

Lubrication/Loss power **[kW]**

Speed shifting/Pressure **[bar]**

Speed shifting/Flow rate **[l/mn]**

RAM design for external forced lubrication

Gearbox only

Gearbox + Cooling Jacket

Gearbox + Cooling Jacket  
+ output shaft arrangement

## S1 - 100%

Gear 1:1		Gear 5:1	
1500	9000	300	1800
43.7	43.7	42.4	42.4
278	46	1349	225

GM 1300



RAM 220



## S6 - 40%

Gear 1:1		Gear 5:1	
1500	9000	300	1800
60.9	60.9	59.1	59.1
388	65	1880	313

## Technical Features

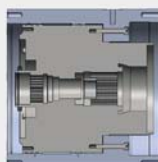
Vertical, horizontal and Swiveling
Siemens/Fanuc/Heidenhain
Internal splines
35
1.31
Grease
2
0.61
50 to 100
5 to 7

## Interface

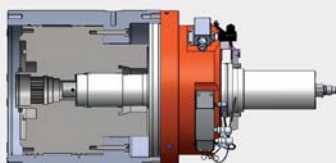
HIT



FOT



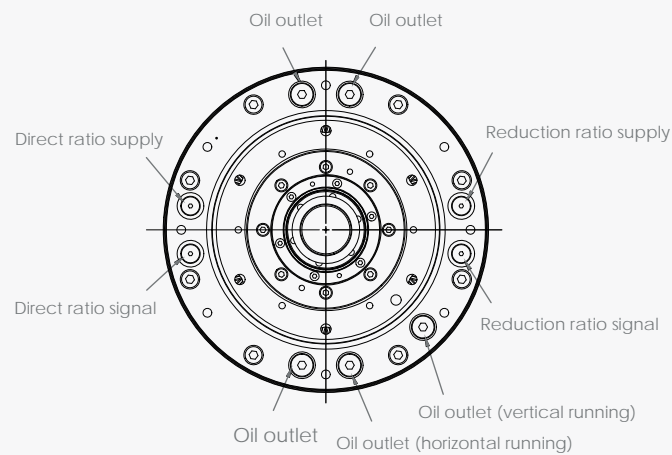
FOA



## DIMENSIONS

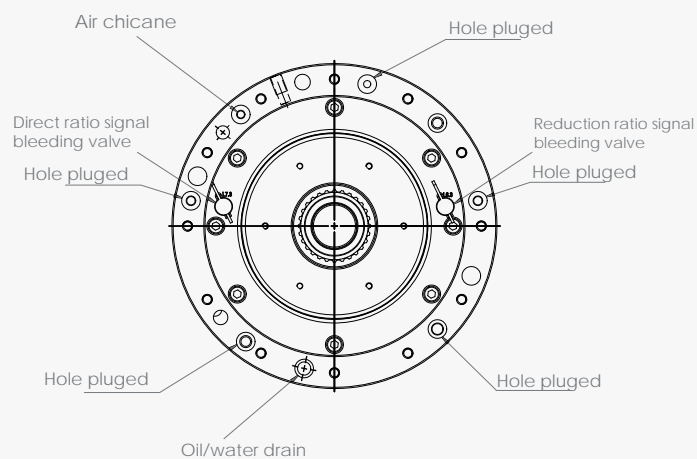
HIT

**A View**



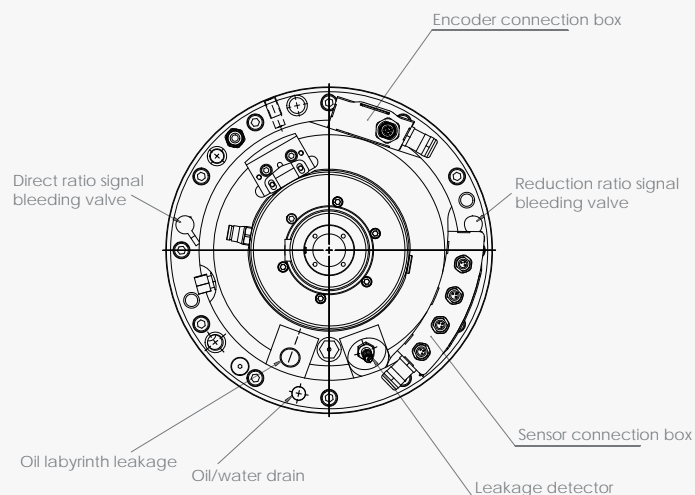
FOT

**B View**



FOA

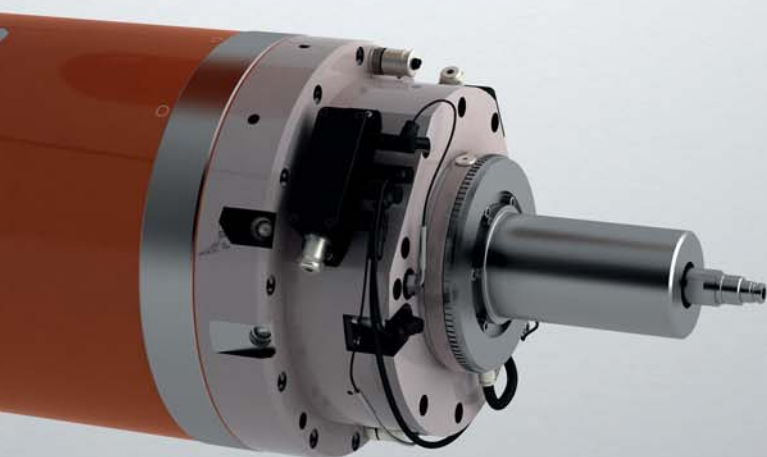
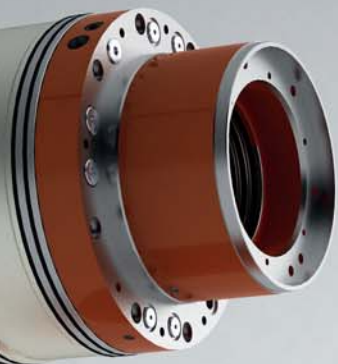
**C View**







# RAM *SIZE 250*



Speed	<b>N1B</b>	<b>[rpm]</b>
Power	<b>P</b>	<b>[kW]</b>
Torque	<b>T2N</b>	<b>[Nm]</b>

Speed	<b>N1B</b>	<b>[rpm]</b>
Power	<b>P</b>	<b>[kW]</b>
Torque	<b>T2N</b>	<b>[Nm]</b>

Control	
Interface	
Cooling/Flow rate	<b>[l/mn]</b>
Cooling/Loss power	<b>[kW]</b>
Bearings lubrication	
Lubrication/Flow rate	<b>[l/mn]</b>
Lubrication/Loss power	<b>[kW]</b>
Speed shifting/Pressure	<b>[bar]</b>
Speed shifting/Flow rate	<b>[l/mn]</b>

RAM design for external forced lubrication

Gearbox only

Gearbox + Cooling Jacket

Gearbox + Cooling Jacket  
+ output shaft arrangement

## S1 - 100%

Gear 1:1		Gear 5:1	
1500	8000	300	1600
60.2	60.2	58.4	58.4
384	72	1860	349

## S6 - 40%

Gear 1:1		Gear 5:1	
1500	8000	300	1600
83.6	83.6	81	81
532	100	2580	484

GM 2000



RAM 250



## Technical Features

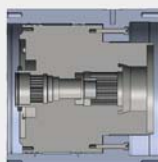
Siemens/Fanuc/Heidenhain
Internal splines
40
1.81
Grease
2.5
0.77
50 to 100
8 to 10

## Interface

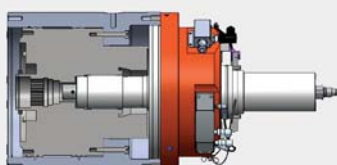
HIT



FOT



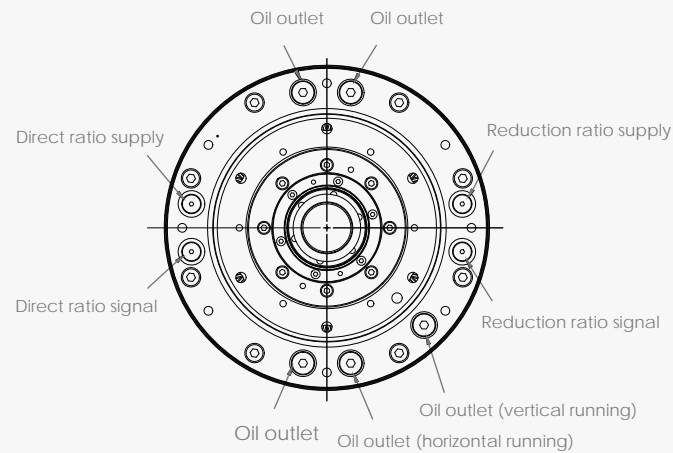
FOA



## DIMENSIONS

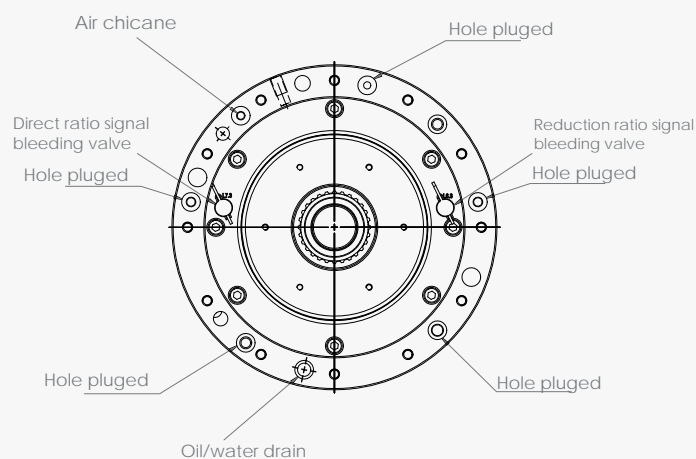
HIT

A View



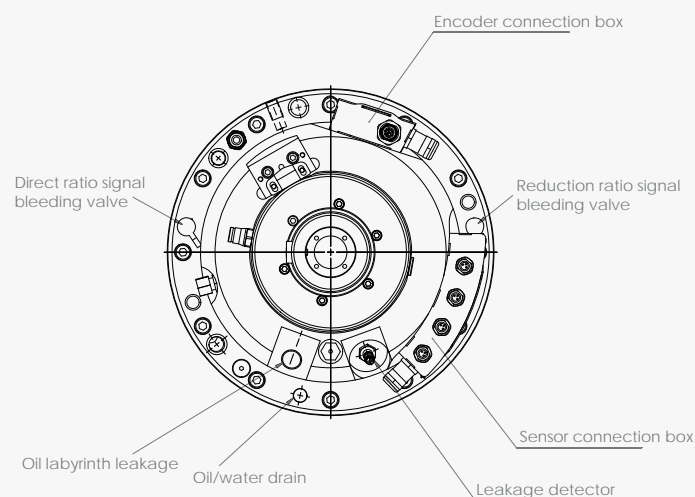
FOT

B View



FOA

C View

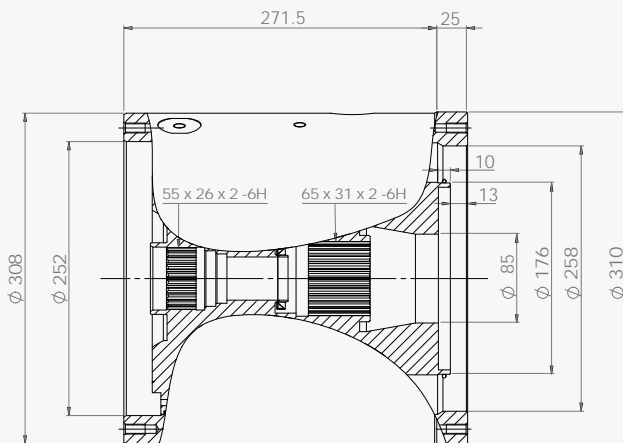
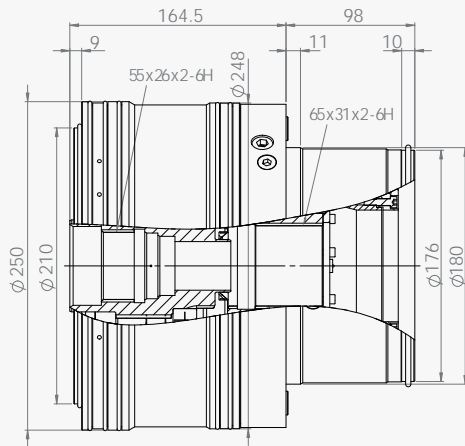


# DIMENSIONS

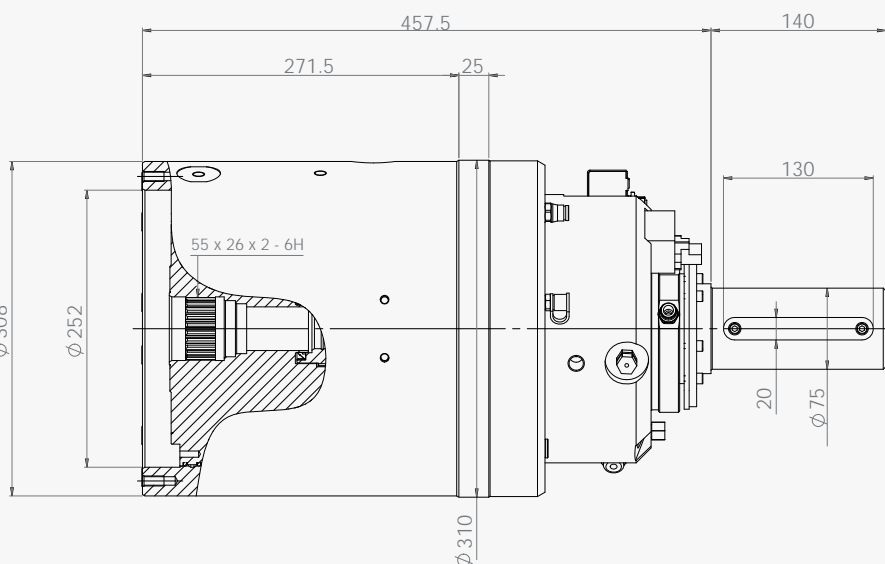
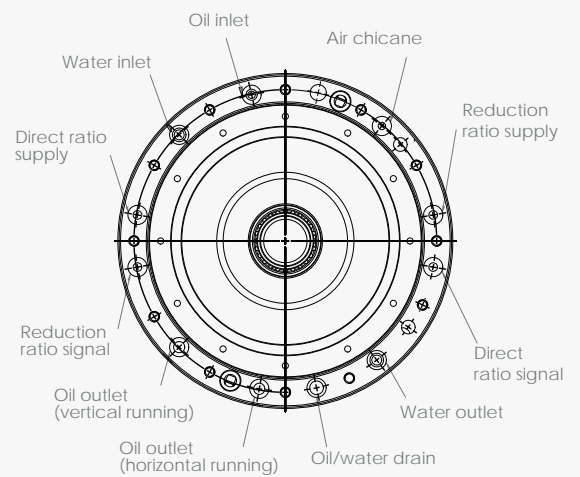
GM 2000

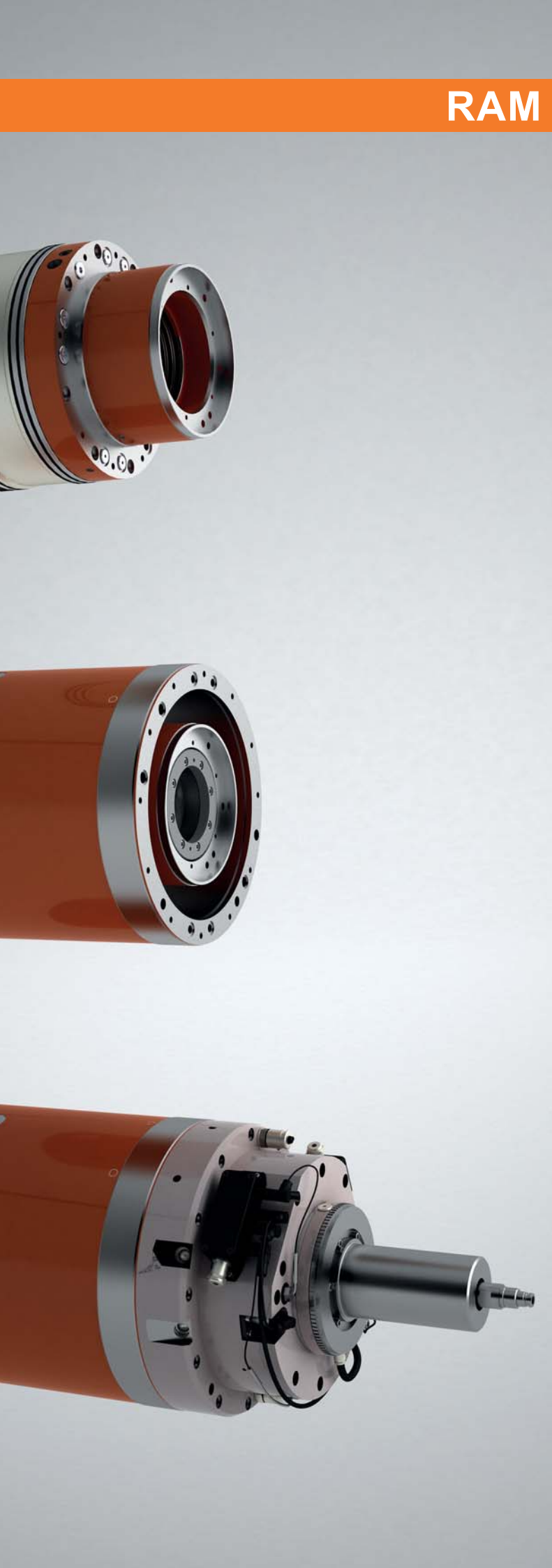


RAM 250



## D View





# RAM *SIZE 280*

Speed	N1B	[rpm]
Power	P	[kW]
Torque	T2N	[Nm]

Speed	N1B	[rpm]
Power	P	[kW]
Torque	T2N	[Nm]

Mounting position	
Control	
Interface	
Cooling/Flow rate	[l/mn]
Cooling/Loss power	[kW]
Bearings lubrication	
Lubrication/Flow rate	[l/mn]
Lubrication/Loss power	[kW]
Speed shifting/Pressure	[bar]
Speed shifting/Flow rate	[l/mn]

RAM design for external forced lubrication

Gearbox only

Gearbox + Cooling Jacket

Gearbox + Cooling Jacket  
+ output shaft arrangement

## S1 - 100%

Gear 1:1		Gear 5:1	
1500	7000	300	1400
97.1	97.1	94.2	94.2
619	133	3000	643

## S6 - 40%

Gear 1:1		Gear 5:1	
1500	7000	300	1400
145.7	145.7	141.3	141.3
928	199	4500	964

GM 3000



RAM 280



## Technical Features

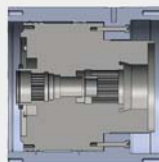
Vertical and horizontal
Siemens/Fanuc/Heidenhain
Internal splines
40
2.91
Grease
3
0.92
50 to 100
8 to 10

## Interface

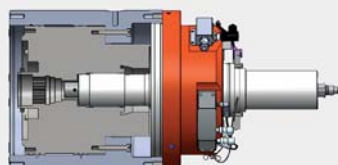
HIT



FOT



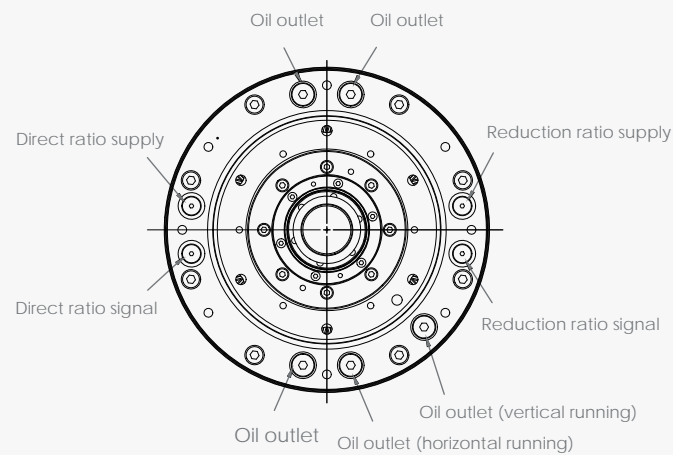
FOA



## DIMENSIONS

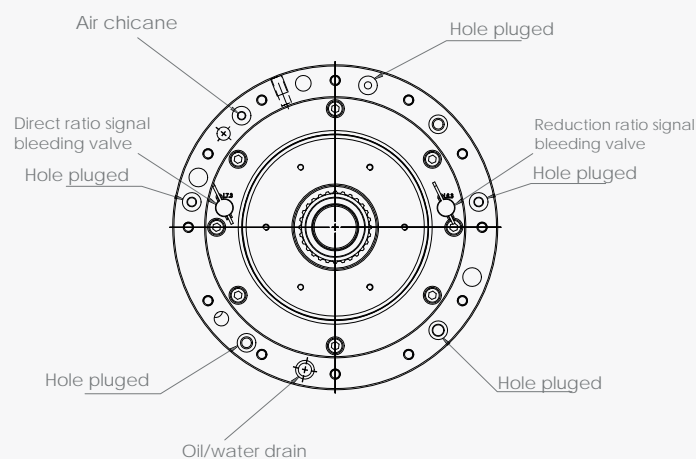
HIT

**A View**



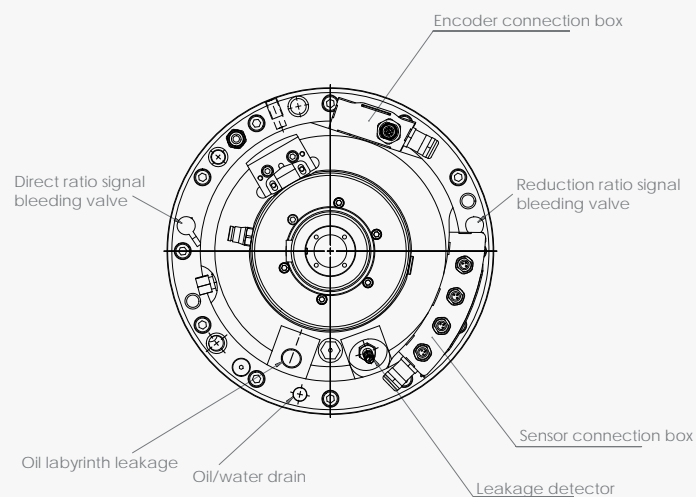
FOT

**B View**



FOA

**C View**

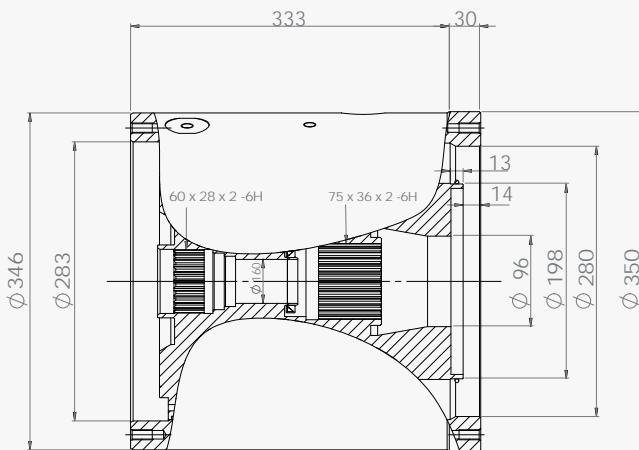
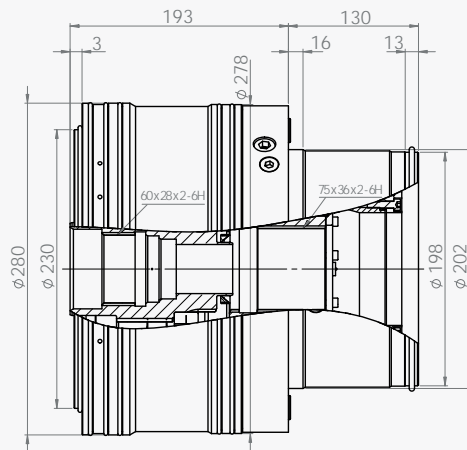


# DIMENSIONS

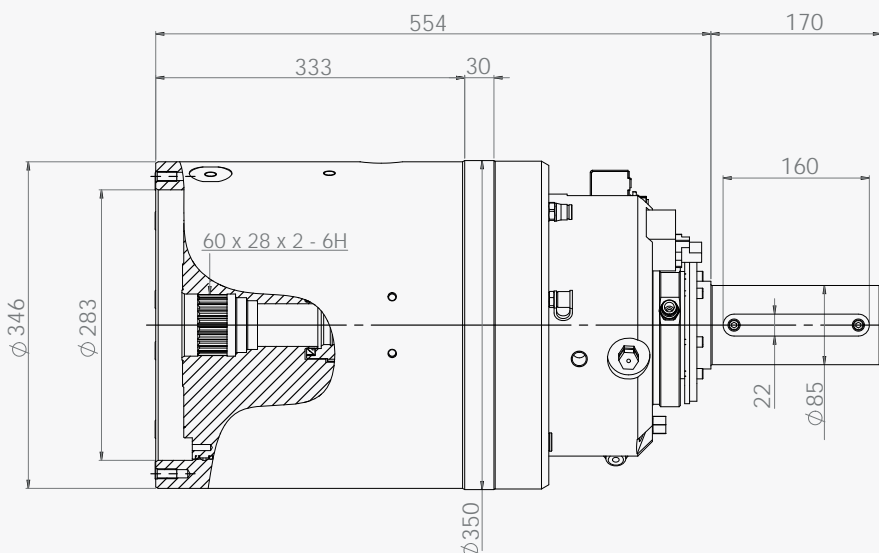
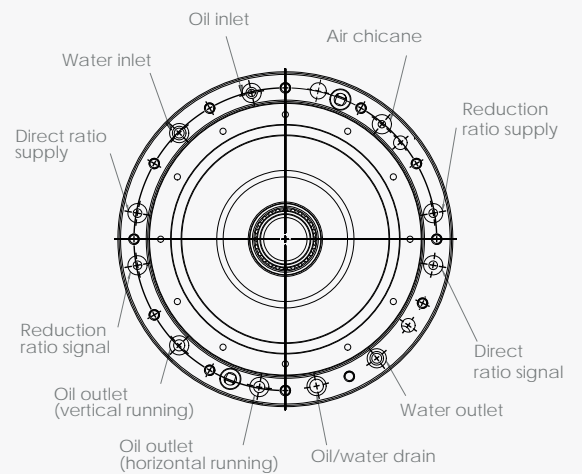
GM 3000



RAM 280

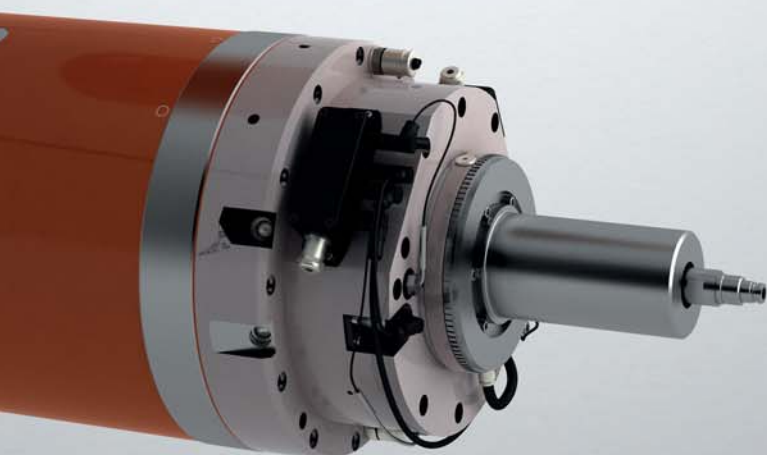
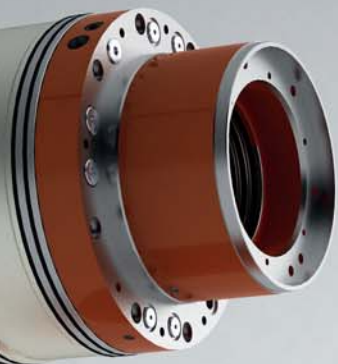


## D View





# RAM *SIZE 350*



Speed	N1B	[rpm]
Power	P	[kW]
Torque	T2N	[Nm]

Speed	N1B	[rpm]
Power	P	[kW]
Torque	T2N	[Nm]

Control	
Interface	
Cooling/Flow rate	[l/mn]
Cooling/Loss power	[kW]
Bearings lubrication	
Lubrication/Flow rate	[l/mn]
Lubrication/Loss power	[kW]
Speed shifting/Pressure	[bar]
Speed shifting/Flow rate	[l/mn]

RAM design for external forced lubrication

Gearbox only

Gearbox + Cooling Jacket

Gearbox + Cooling Jacket  
+ output shaft arrangement

## S1 - 100%

Gear 1:1		Gear 5:1	
550	6000	110	1200
83.1	83.1	80.6	80.6
1443	132	7000	642

## S6 - 40%

Gear 1:1		Gear 5:1	
550	6000	110	1200
133	133	129	129
2309	212	11200	1027

GM 7000



RAM 350



## Technical Features

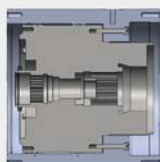
Siemens/Fanuc/Heidenhain
Internal splines
40
2.49
Grease
3.5
1.07
50 to 100
8 to 10

## Interface

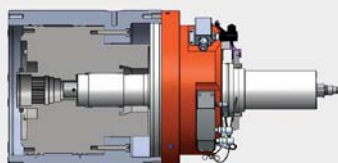
HIT



FOT



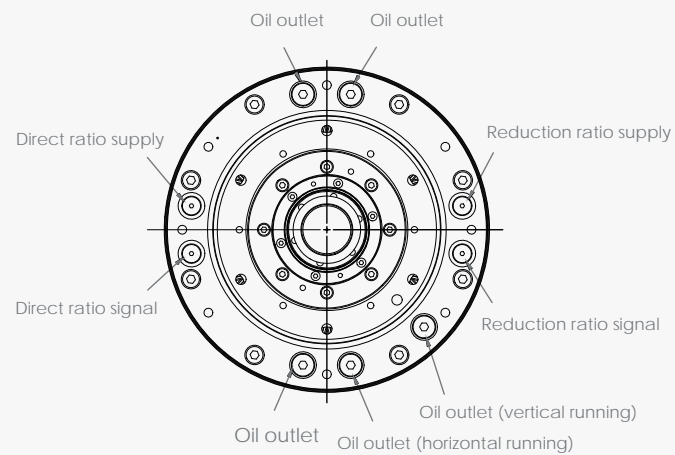
FOA/FOB



## DIMENSIONS

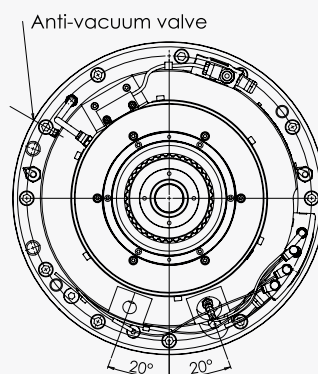
HIT

A View



FOB

B View





**ANDANTEX** USA Inc.

1705 Valley Road,  
Wanamassa, NJ 07712  
800-713-6170  
Fax 732-493-2949  
E-mail [info@andantex.com](mailto:info@andantex.com)  
**[WWW.ANDANTEX.COM](http://WWW.ANDANTEX.COM)**