

# DRP *SIZE 2*



## DRP2

Weight

Efficiency

Backlash

Color

## Tooth type

Module

Helix angle (left)

Number of teeth

Pressure angle

Theoretical pitch diameter

Addendum modification factor

Pinion quality grade

Surface hardness

## Ratio

Nominal feed force

Peak acceleration feed force

Max. acceleration feed force

E-stop force

Max. linear speed

Nominal linear speed

Linear stiffness on the rack

Inertia

## Ratio

Nominal output torque

Max. output torque

No load torque

No load torque

E-stop torque

Max. input speed

Nominal input speed

Radial stiffness

Axial stiffness

Torsional stiffness

## General data

			<b>M</b>	<b>R</b>
<b>m</b>	kg	1 Stage		
		2 Stages	202	207
<b>η</b>	%	1 Stage		
		2 Stages	93	91
<b>J</b>	arcmin	Standard	3	4
		Reduced	1	2
RAL2012				

## Pinion features

		<b>Helical</b>	<b>Straight</b>
<b>Mo</b>	mm	4	4
<b>β</b>	deg	19°31'42"	0°
<b>Z2</b>	-	18	19
<b>α</b>	deg	20°	20°
<b>D02</b>	mm	76,39	76
<b>x0</b>	-	0,638	0,688
<b>Q</b>	(ISO 1328)	6	6
<b>HRC</b>	HRC	61-63	61-63

## Rack features

<b>Version</b>			<b>Helical</b>	<b>Straight</b>
Standard	<b>F2B</b>	N	28552	24705
	<b>F2NOT</b>	N	57103	42966
	<b>Material</b>		C45E DIN 1.1191	
Reinforced	<b>F2B</b>	N	35138	N/A
	<b>F2NOT</b>	N	76388	N/A
	<b>Material</b>		16MnCr5	
Available length	<b>L</b>	mm	500, 1000, 2000	
Dimensions	see details p113-115			

## Drive linear features

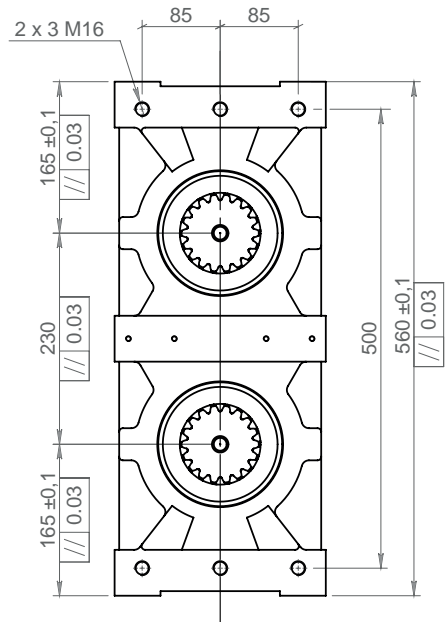
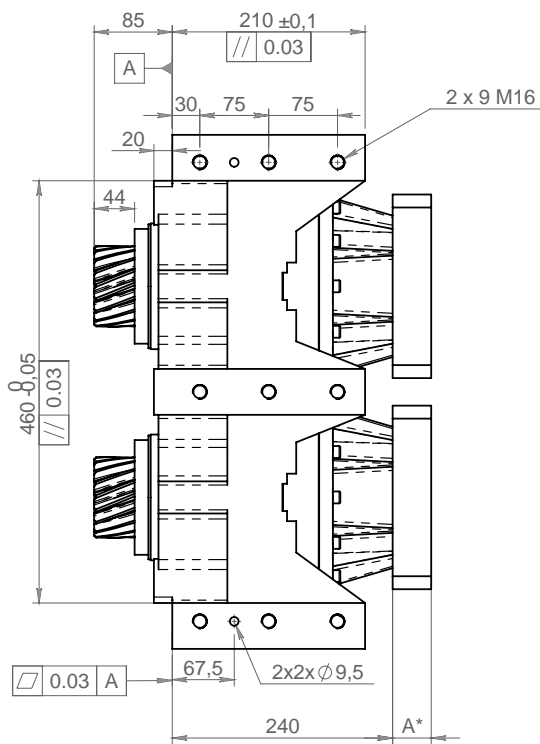
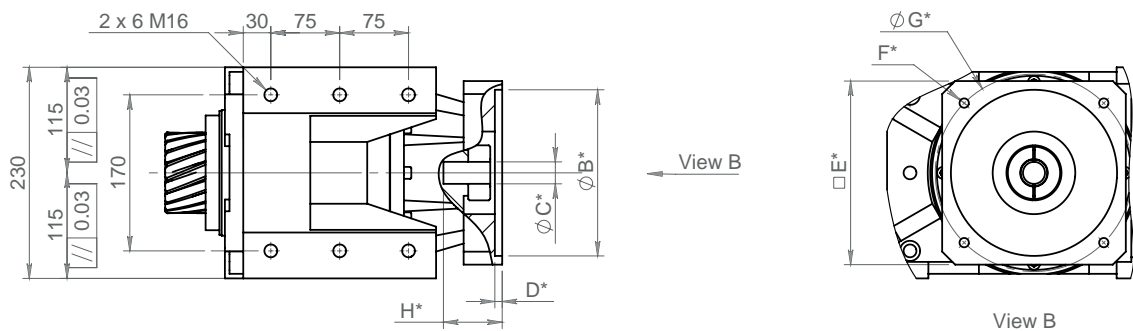
		<b>5</b>	<b>7</b>	<b>10</b>	<b>17</b>	<b>21</b>	<b>31</b>	<b>46</b>	<b>61</b>	<b>91</b>
<b>F2N</b>	N				27491	20945	31418	20945	30109	20945
<b>F2B</b>	N				48121	36654	54981	36654	52703	36654
<b>F2B_max</b>	N				96243	73308	109962	73308	73308	73308
<b>F2NOT</b>	N				71999	71999	71999	71999	71999	71999
<b>V2B</b>	m/min				85	69	46	31	24	16
<b>V2N</b>	m/min				30	24	16	11	8	6
<b>K2T +M</b>	N/μm				291	276	291	278	288	275
<b>K2T +R</b>	N/μm					251	273	273	265	275
<b>I +M</b>	kg.mm <sup>2</sup>				816	722	663	634	596	588
<b>I +R</b>	kg.mm <sup>2</sup>					1313	1254	1226	1188	1160

## DRP ratings

		<b>5</b>	<b>7</b>	<b>10</b>	<b>17</b>	<b>21</b>	<b>31</b>	<b>46</b>	<b>61</b>	<b>91</b>
<b>T2N</b>	Nm				1050	800	1200	800	1150	800
<b>T2B</b>	Nm				1838	1400	2100	1400	2013	1400
<b>T01 +R</b>	Nm					2,3	2,3	2,3	2,3	2,3
<b>T01 +M</b>	Nm				2	2	2	2	2	2
<b>T2NOT</b>	Nm				2750	2750	2750	2750	2750	2750
<b>n1B</b>	rpm				6000	6000	6000	6000	6000	6000
<b>n1N</b>	rpm				2100	2100	2100	2100	2100	2100
<b>K2R</b>	N/μm				650	650	650	650	650	650
<b>K2A</b>	N/μm				2162	2162	2162	2162	2162	2162
<b>C2t +R</b>	Nm/ rad				-	677236	794120	794120	866312	804433
	Nm/arcmin					197	231	231	252	234
<b>C2t +M</b>	Nm/ rad				904127	814746	904127	825059	883501	807870
	Nm/arcmin				263	237	263	240	257	235

Dimensions and main data for information only - Please consult us and / or refer to Products Datasheets  
 For accurate selection, contact your local supplier

## DIMENSIONS - TYPE M



	IFB 140 14/24	IFB 140 28/38	IFB 200 28/38	IFB 260 28/38
<b>A</b>	37	42	57	64
<b>E</b>	140	140	200	260
<b>H</b>	59	65	80	87

\*B C D F G According to motor dimensions  
Tapping depth = 1.5x0 thread

