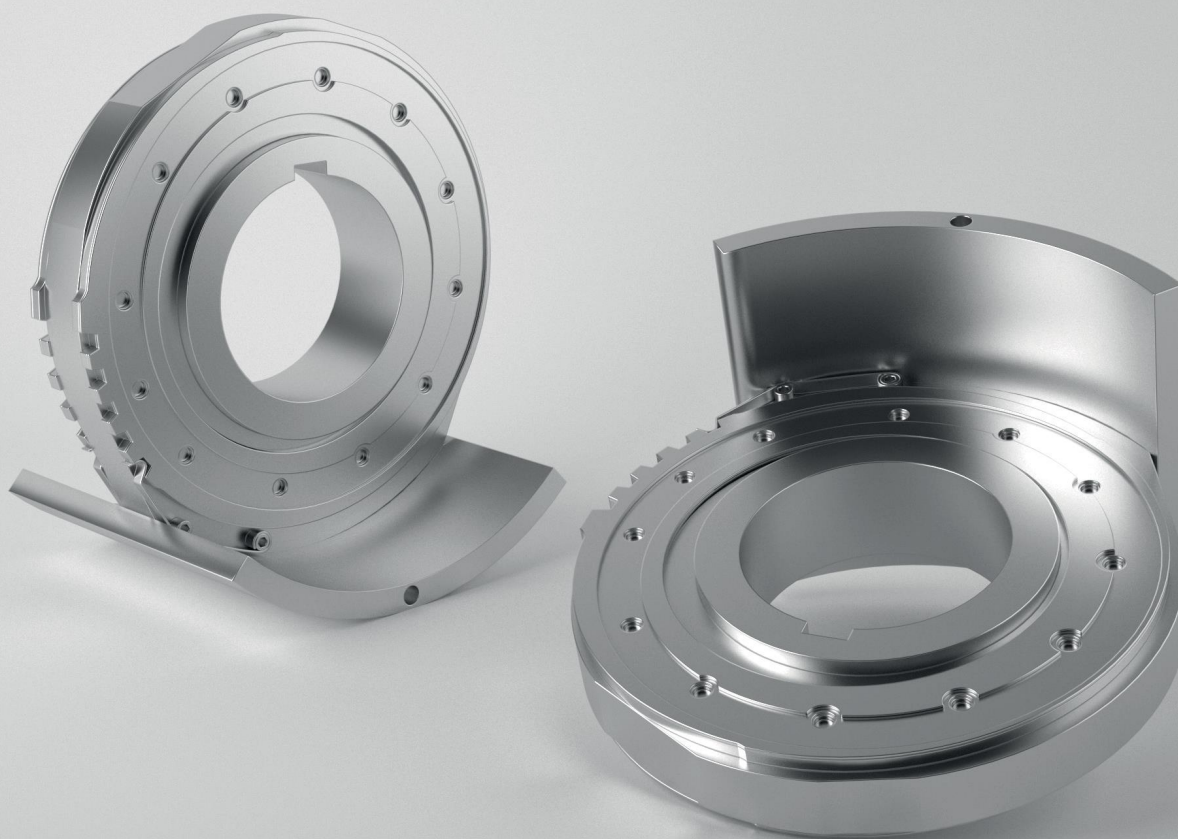


REDEX

Group

S-Max™ design



REDEX USA

1705 Valley Road
Ocean Township
New Jersey 07712 - USA
(+1) 732-493-2812
dsequeira@redex-group.com

www.redex-group.com

REDEX SAS

1 Rue Paul Defontenay
45210 Ferrières - France
(+33) 2 38 94 42 00
info@redex-group.com

Higher rolling speed and advanced automation make the 20-High Mills more and more efficient and increase their global productivity.

To offer ever better Backing Assemblies service to steel producers, REDEX developed the **Redex™ S-Max design** ⁽¹⁾ with a special design dedicated to the new 20-High Mills generation.



TECHNICAL FEATURES

- Easier maintenance of Saddles and Shafts
- Innovations in Backing Assemblies lubrication
- Enhanced metallurgic characteristics
- Use of the latest improvements in Heat treatment technologies
- Specific design of Gears and Racks
- Specific design of Saddles, including exclusive crown adjustment and needle bearings optimization, achieving an increase of technical characteristics up to 50%.

MAIN BENEFITS

- Reduced maintenance lead time
- Increased parts lifetime.



Redex s-max™ design is the ideal technology for the 20-High Mills users to improve their equipment's TCO (Total Cost of Ownership).

⁽¹⁾ S-Max: Service-Maximum